

# Kingfisher

## Independent Living Unit

# Carlyle Gardens

RETIREMENT VILLAGE



### AREA

Internal	139.21m <sup>2</sup>
Total Outdoor Area (Patio, outdoor area and side strip)	42.59m <sup>2</sup>
Total Area	181.8m <sup>2</sup>

### ROOM

Bedroom	4.1m x 4.2m
Ensuite	2.4m x 3.0m
Bathroom/Laundry	3.0m x 2.8m
Bedroom 2	3.0m x 3.6m
Living room	5.7m x 4.6m
Kitchen	3.8m x 2.9m
Garage	3.8m x 6.6m

Floorplan available in reverse.



## Carlyle Gardens Retirement Village

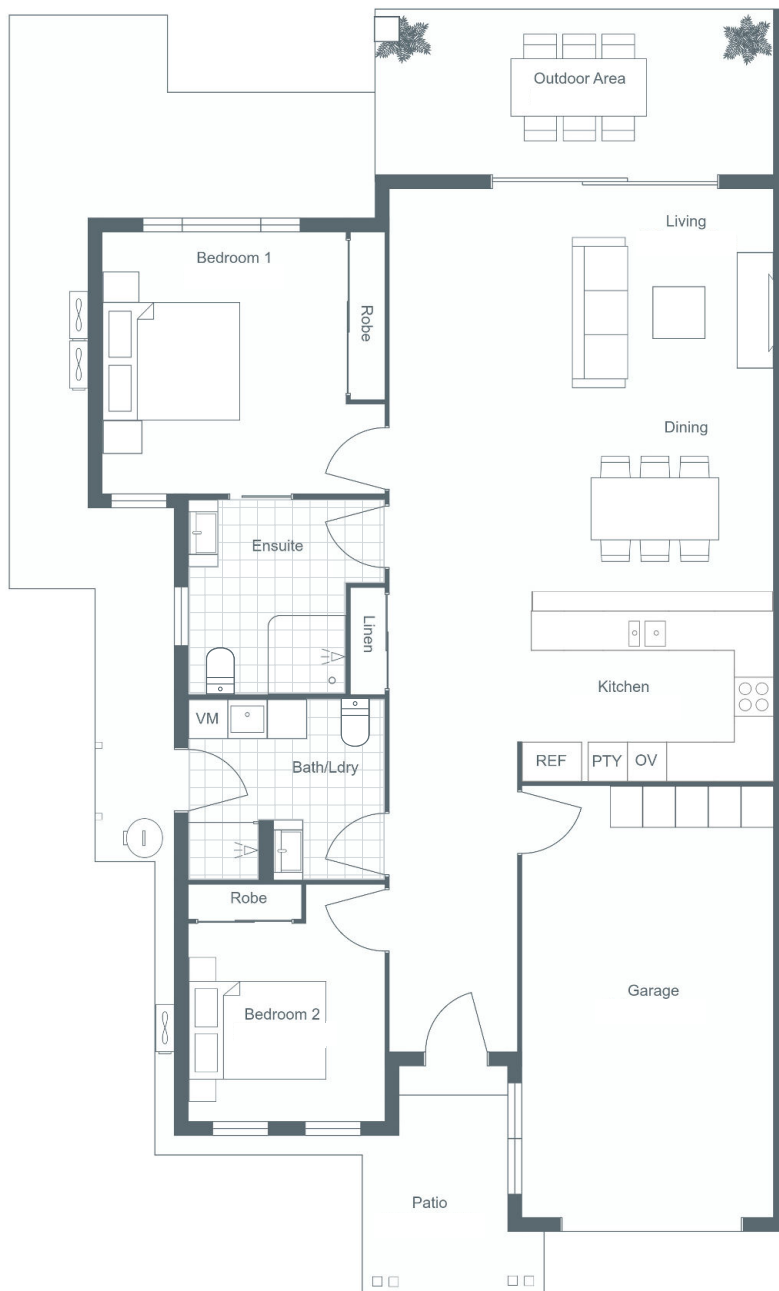
[retireaustralia.com.au/carlylegardens](http://retireaustralia.com.au/carlylegardens) > 3 Carlyle Court, Bargarra



This marketing plan is indicative only and has been prepared prior to construction of the development. It is intended to illustrate an artistic impression of how the development will look. Any feature depicted in the marketing plan does not form part of any agreement or contract you may enter into with us. While we have used our best endeavours and taken every care in preparing the marketing plan to ensure its accuracy, we give no warranty as to the accuracy, completeness, currency or reliability of any of the aspects of the development depicted in the marketing plan. You should not rely on the marketing plan in making any decision to purchase a dwelling in the development. You must at all times seek independent, specialist advice from legal practitioners and/or building consultants with respect to the development. We also reserve the right to make changes to the development either prior to or during construction, including (without limitation) to the layout, composition, dimensions, specifications, fittings, finishes, paint colours, window placement and landscaping. These changes will not necessarily be reflected in the marketing plan. Apartment and room sizes may vary. Please refer to your Sales Consultant for more details.

# Lyrebird

## Independent Living Unit



### AREA

Internal	149.56m <sup>2</sup>
Total Outdoor Area (Patio, outdoor area and side strip)	49.44m <sup>2</sup>
Total Area	199.0m <sup>2</sup>

### ROOM

Bedroom	4.3m x 4.0m
Ensuite	2.4m x 3.0m
Bathroom/Laundry	2.4m x 2.8m
Bedroom 2	3.0m x 3.6m
Living room	5.9m x 6.2m
Kitchen	3.9m x 2.9m
Garage	3.8m x 6.6m

Floorplan available in reverse.

Carlyle Gardens Retirement Village

[retireaustralia.com.au/carlylegardens](http://retireaustralia.com.au/carlylegardens) > 3 Carlyle Court, Bargarra



This marketing plan is indicative only and has been prepared prior to construction of the development. It is intended to illustrate an artistic impression of how the development will look. Any feature depicted in the marketing plan does not form part of any agreement or contract you may enter into with us. While we have used our best endeavours and taken every care in preparing the marketing plan to ensure its accuracy, we give no warranty as to the accuracy, completeness, currency or reliability of any of the aspects of the development depicted in the marketing plan. You should not rely on the marketing plan in making any decision to purchase a dwelling in the development. You must at all times seek independent, specialist advice from legal practitioners and/or building consultants with respect to the development. We also reserve the right to make changes to the development either prior to or during construction, including (without limitation) to the layout, composition, dimensions, specifications, fittings, finishes, paint colours, window placement and landscaping. These changes will not necessarily be reflected in the marketing plan. Apartment and room sizes may vary. Please refer to your Sales Consultant for more details.

# Norfolk

## Independent Living Unit

**Carlyle Gardens**  
RETIREMENT VILLAGE



### AREA

Internal	180.46m <sup>2</sup>
Total Outdoor Area (Patio, outdoor area and side strip)	58.84m <sup>2</sup>
Total Area	239.3m <sup>2</sup>

### ROOM

Bedroom	3.9m x 4.2m
Ensuite	3.0m x 2.6m
Bathroom/Laundry	3.0m x 1.9m
Bedroom 2	3.1m x 3.3m
Living room	8.0m x 5.5m
Study	2.7m x 3.3m
Kitchen	3.0m x 4.1m
Garage	3.8m x 6.8m

Floorplan available in reverse.

Carlyle Gardens Retirement Village

[retireaustralia.com.au/carlylegardens](http://retireaustralia.com.au/carlylegardens) > 3 Carlyle Court, Bargara



This marketing plan is indicative only and has been prepared prior to construction of the development. It is intended to illustrate an artistic impression of how the development will look. Any feature depicted in the marketing plan does not form part of any agreement or contract you may enter into with us. While we have used our best endeavours and taken every care in preparing the marketing plan to ensure its accuracy, we give no warranty as to the accuracy, completeness, currency or reliability of any of the aspects of the development depicted in the marketing plan. You should not rely on the marketing plan in making any decision to purchase a dwelling in the development. You must at all times seek independent, specialist advice from legal practitioners and/or building consultants with respect to the development. We also reserve the right to make changes to the development either prior to or during construction, including (without limitation) to the layout, composition, dimensions, specifications, fittings, finishes, paint colours, window placement and landscaping. These changes will not necessarily be reflected in the marketing plan. Apartment and room sizes may vary. Please refer to your Sales Consultant for more details.

# Stradbroke

## Independent Living Unit

**Carlyle Gardens**  
RETIREMENT VILLAGE



### AREA

Internal	153.95m <sup>2</sup>
Total Outdoor Area (Patio, outdoor area and side strip)	69.25m <sup>2</sup>
<b>Total Area</b>	<b>223.2m<sup>2</sup></b>

### ROOM

Bedroom	3.5m x 4.1m
Ensuite	2.6m x 3.0m
Bathroom	3.1m x 1.9m
Laundry	2.1m x 4.3m
Bedroom 2	3.1m x 3.8m
Living room	4.4m x 4.6m
Study	2.8m x 3.2m
Kitchen	2.3m x 4.3m
Garage	3.8m x 6.6m

Floorplan available in reverse.



Carlyle Gardens Retirement Village

[retireaustralia.com.au/carlylegardens](http://retireaustralia.com.au/carlylegardens) > 3 Carlyle Court, Bargarra



This marketing plan is indicative only and has been prepared prior to construction of the development. It is intended to illustrate an artistic impression of how the development will look. Any feature depicted in the marketing plan does not form part of any agreement or contract you may enter into with us. While we have used our best endeavours and taken every care in preparing the marketing plan to ensure its accuracy, we give no warranty as to the accuracy, completeness, currency or reliability of any of the aspects of the development depicted in the marketing plan. You should not rely on the marketing plan in making any decision to purchase a dwelling in the development. You must at all times seek independent, specialist advice from legal practitioners and/or building consultants with respect to the development. We also reserve the right to make changes to the development either prior to or during construction, including (without limitation) to the layout, composition, dimensions, specifications, fittings, finishes, paint colours, window placement and landscaping. These changes will not necessarily be reflected in the marketing plan. Apartment and room sizes may vary. Please refer to your Sales Consultant for more details.